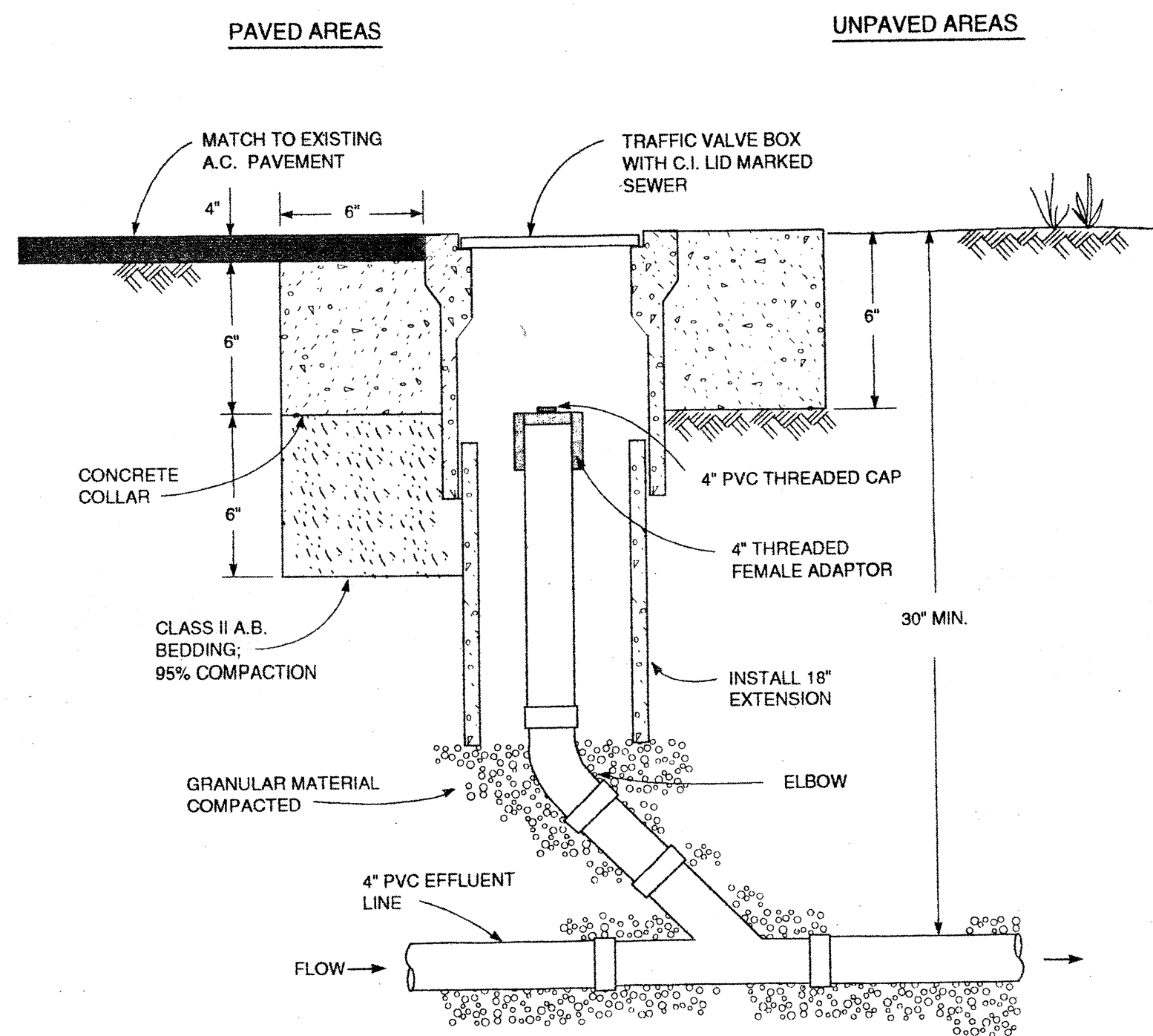
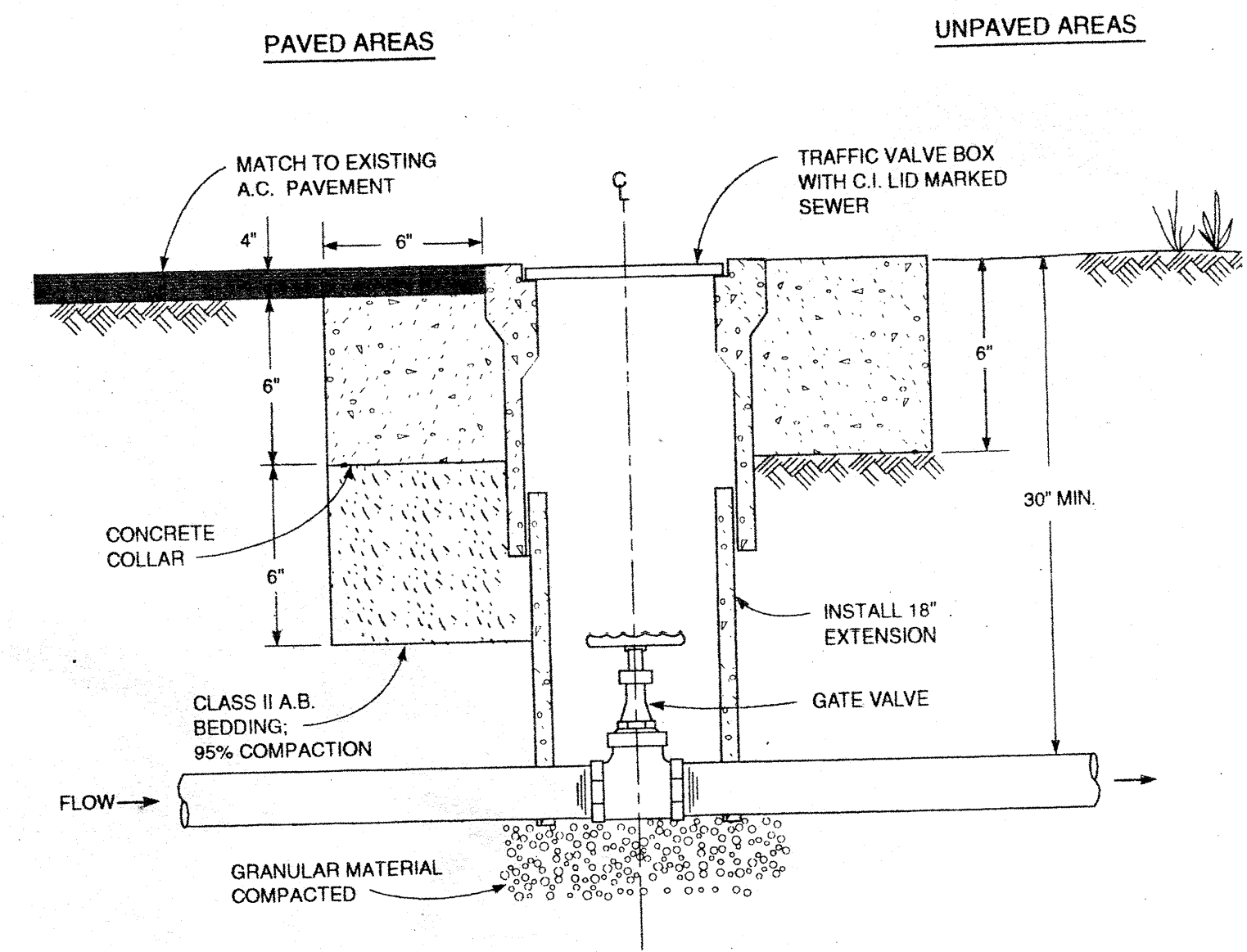


NOTE:  
S.T.E.F. SYSTEMS - ALL FITTINGS AND PIPING 2"  
S.T.E.P. SYSTEMS - ALL FITTINGS AND PIPING 1.25"

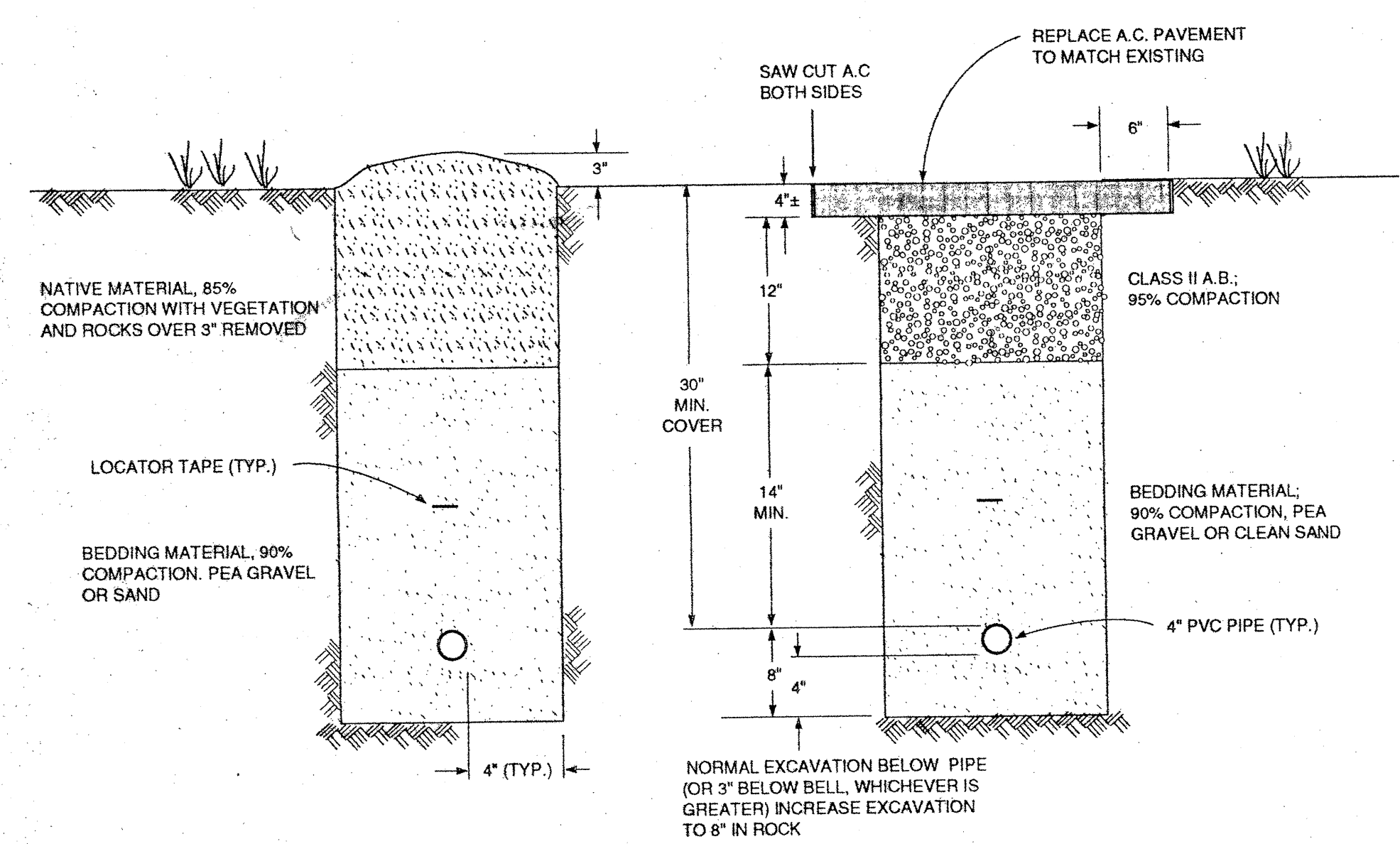
CROSS-SECTION  
**TYPICAL SERVICE CONNECTION**



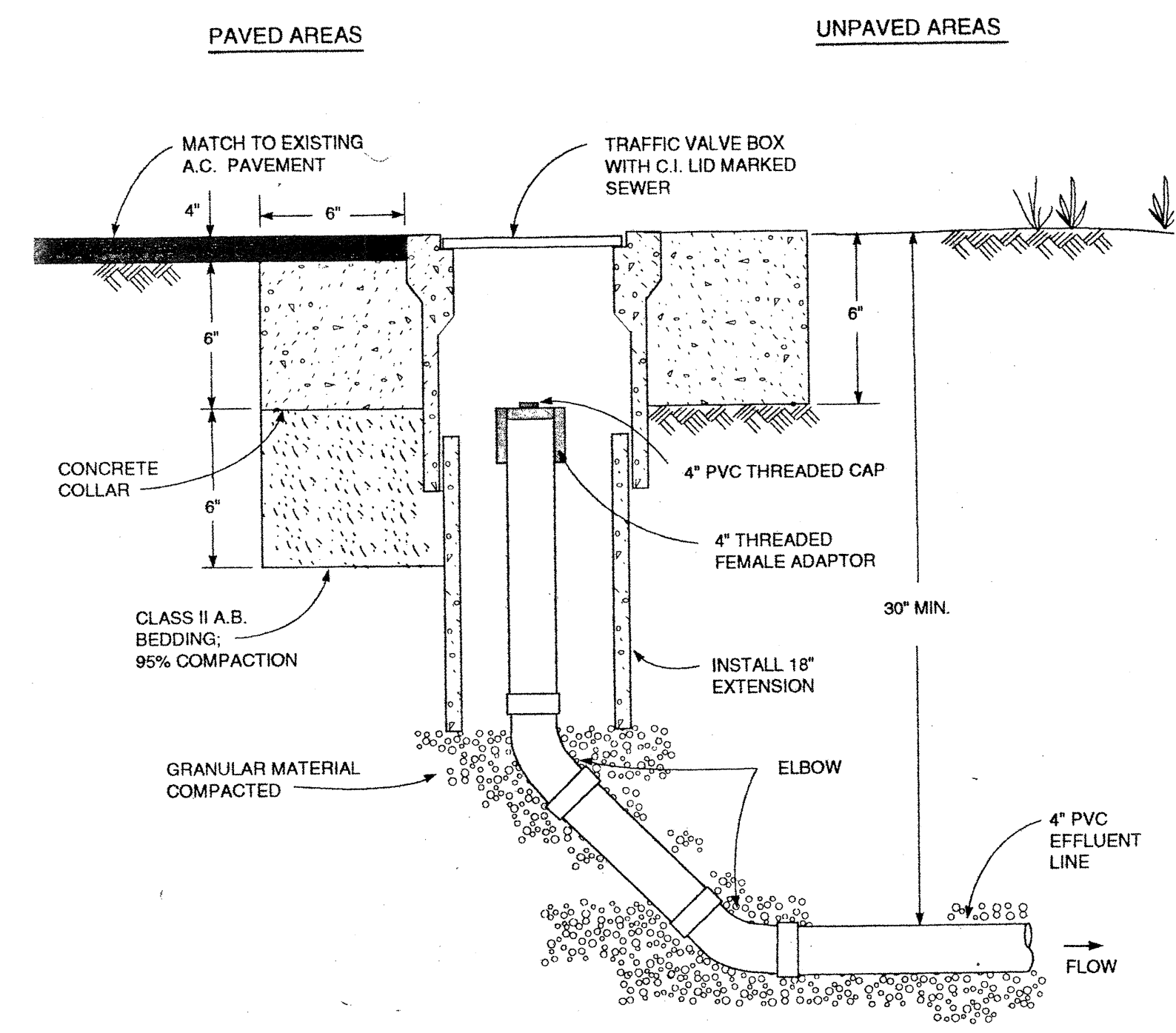
CROSS-SECTION  
**IN-LINE CLEAN OUT DETAIL**



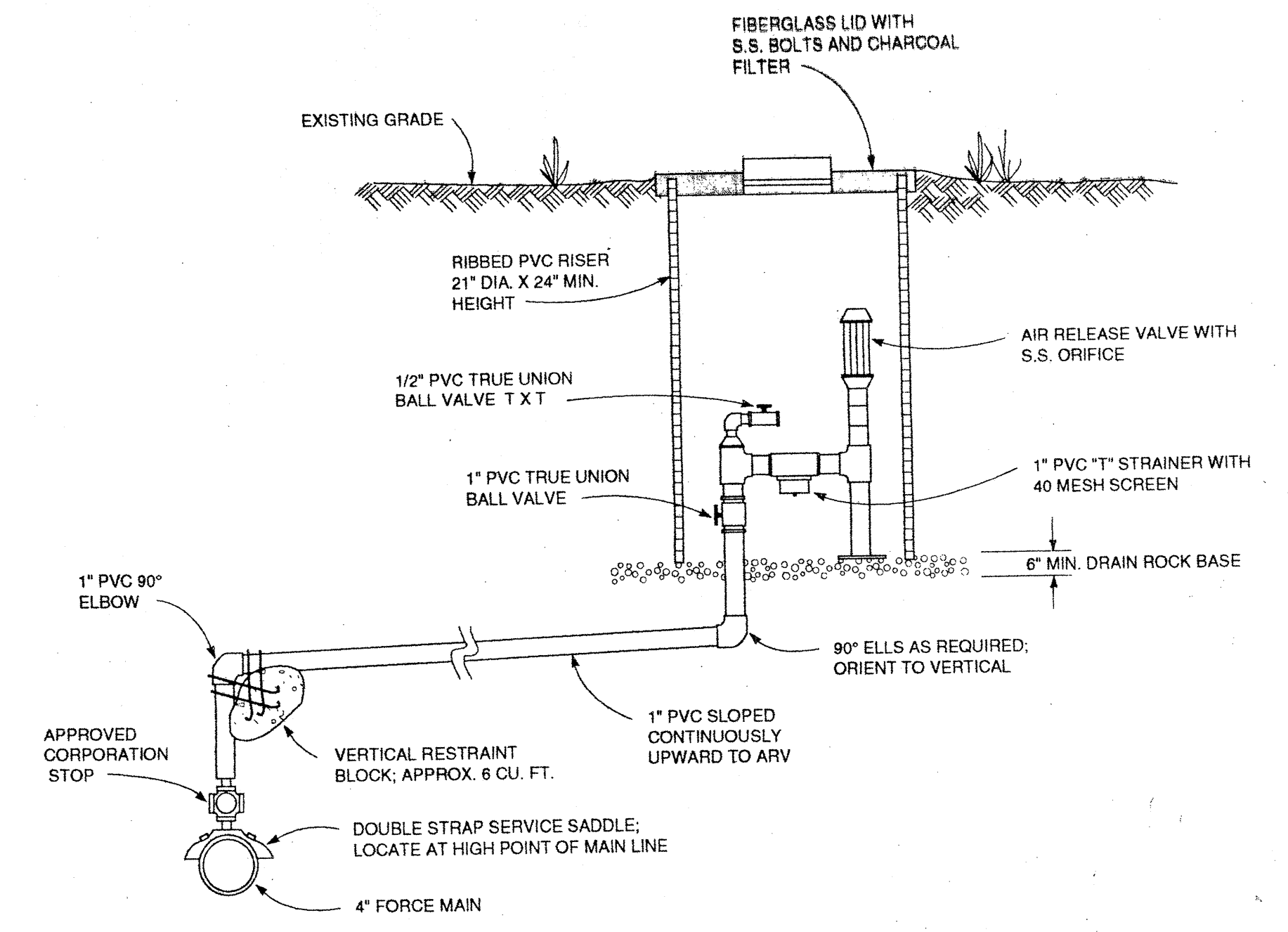
CROSS-SECTION  
**GATE VALVE DETAILS**



CROSS-SECTION  
**TRENCH BACKFILL DETAILS**

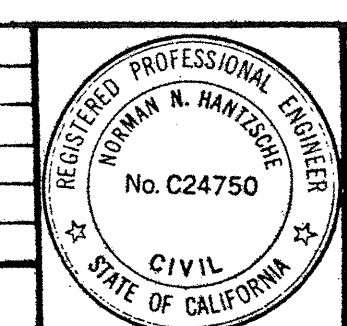


CROSS-SECTION  
**TERMINAL CLEAN OUT DETAIL**



**AIR RELEASE VALVE DETAIL**

REV.	DATE	BY	DESCRIPTION



**Questa Engineering Corporation**  
CIVIL, ENVIRONMENTAL & AGRICULTURAL ENGINEERS  
1220 BRICKYARD COVE ROAD  
POINT RICHMOND, CALIFORNIA 94807

DESIGN:	NH/RM	DATE:	10/94
DRAWN:	SD	SCALE:	
CHK'D:	NH	APPV'D:	NONE

LAKE CANYON COMMUNITY SERVICES DISTRICT  
COMMUNITY WASTEWATER PROJECT  
CONSTRUCTION DETAILS  
COLLECTION SYSTEM

JOB NO.  
**92158**  
SHEET  
**D2**