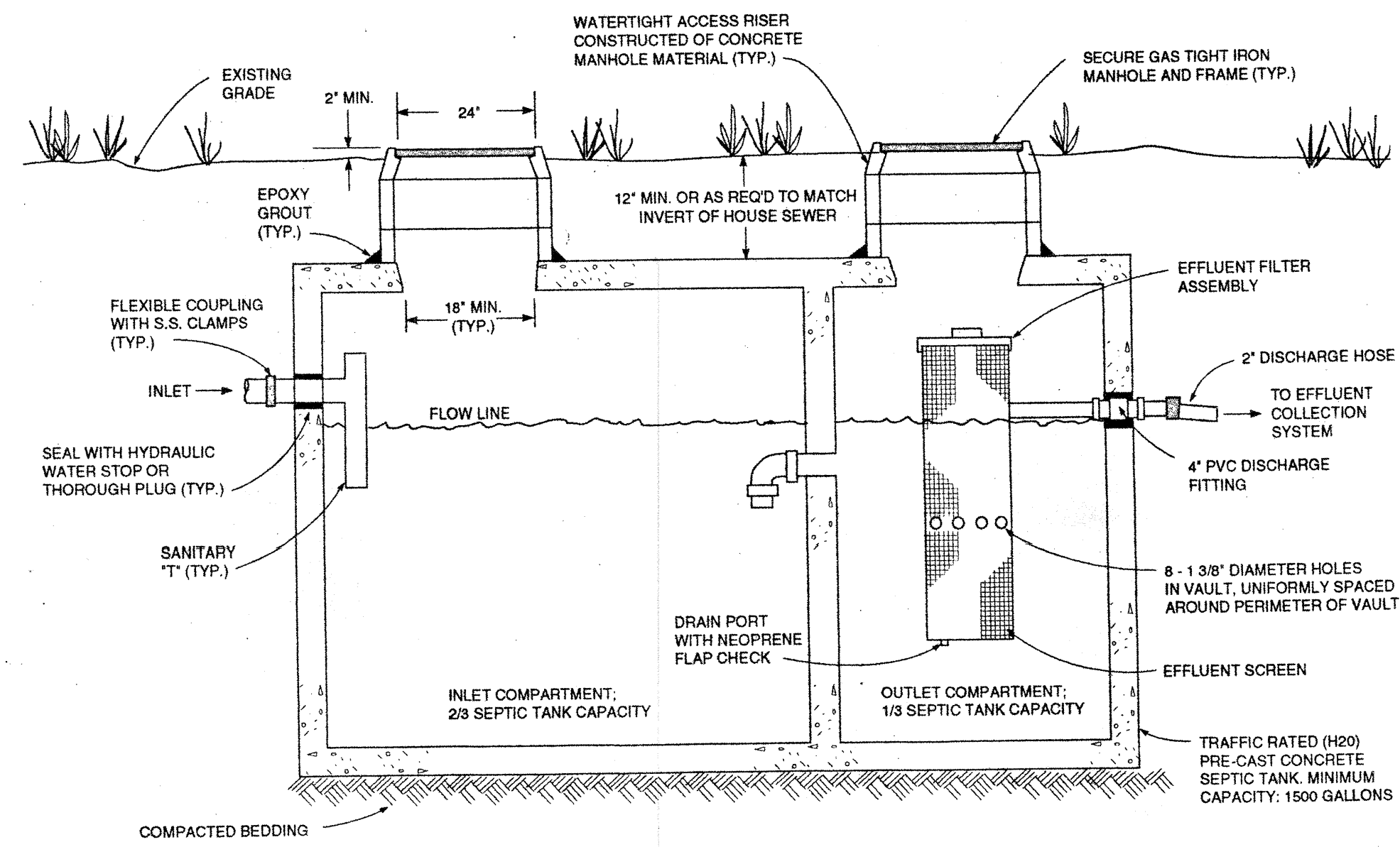
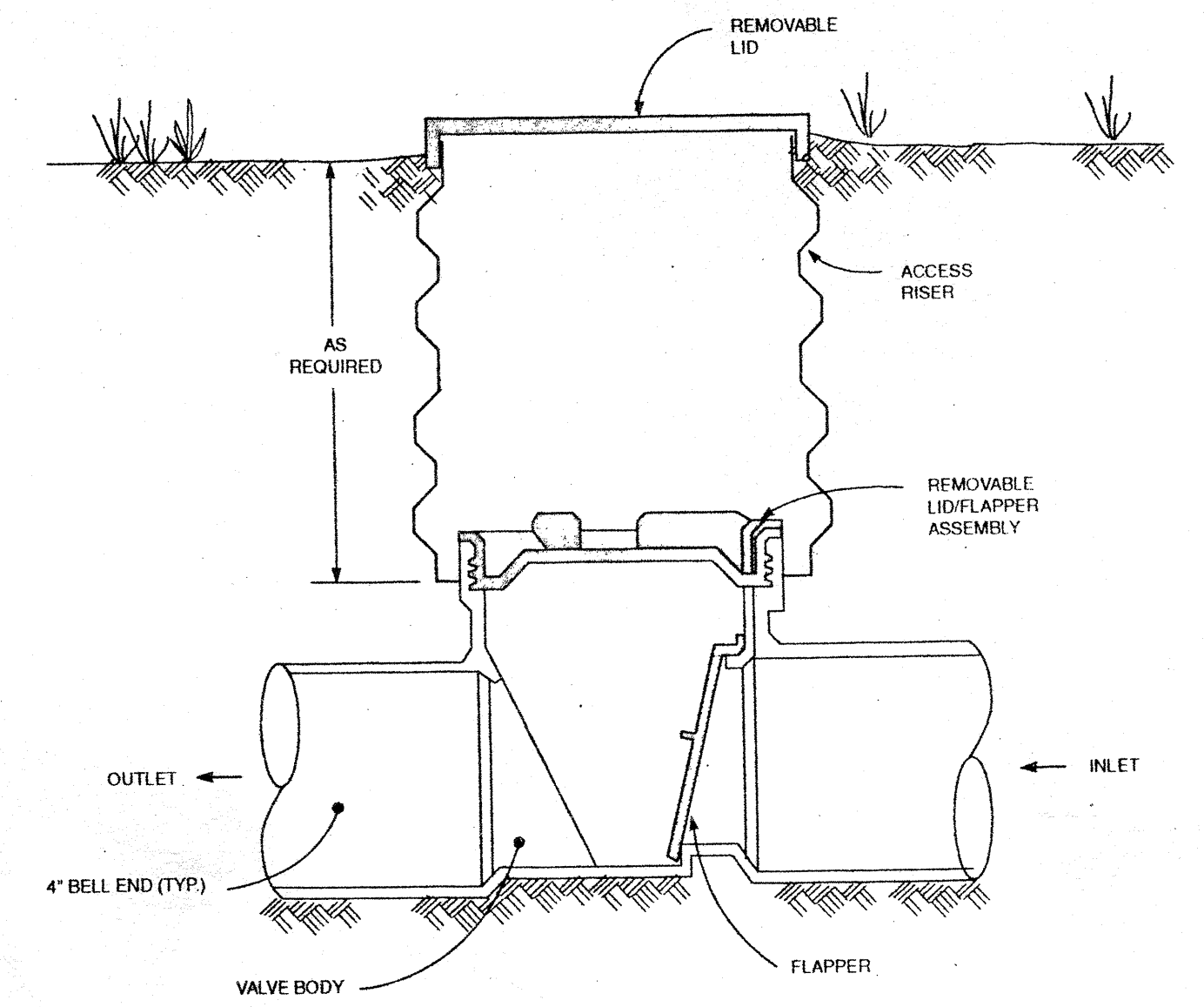


CROSS-SECTION
SEPTIC TANK/EFFLUENT SCREEN (STEF) DETAILS

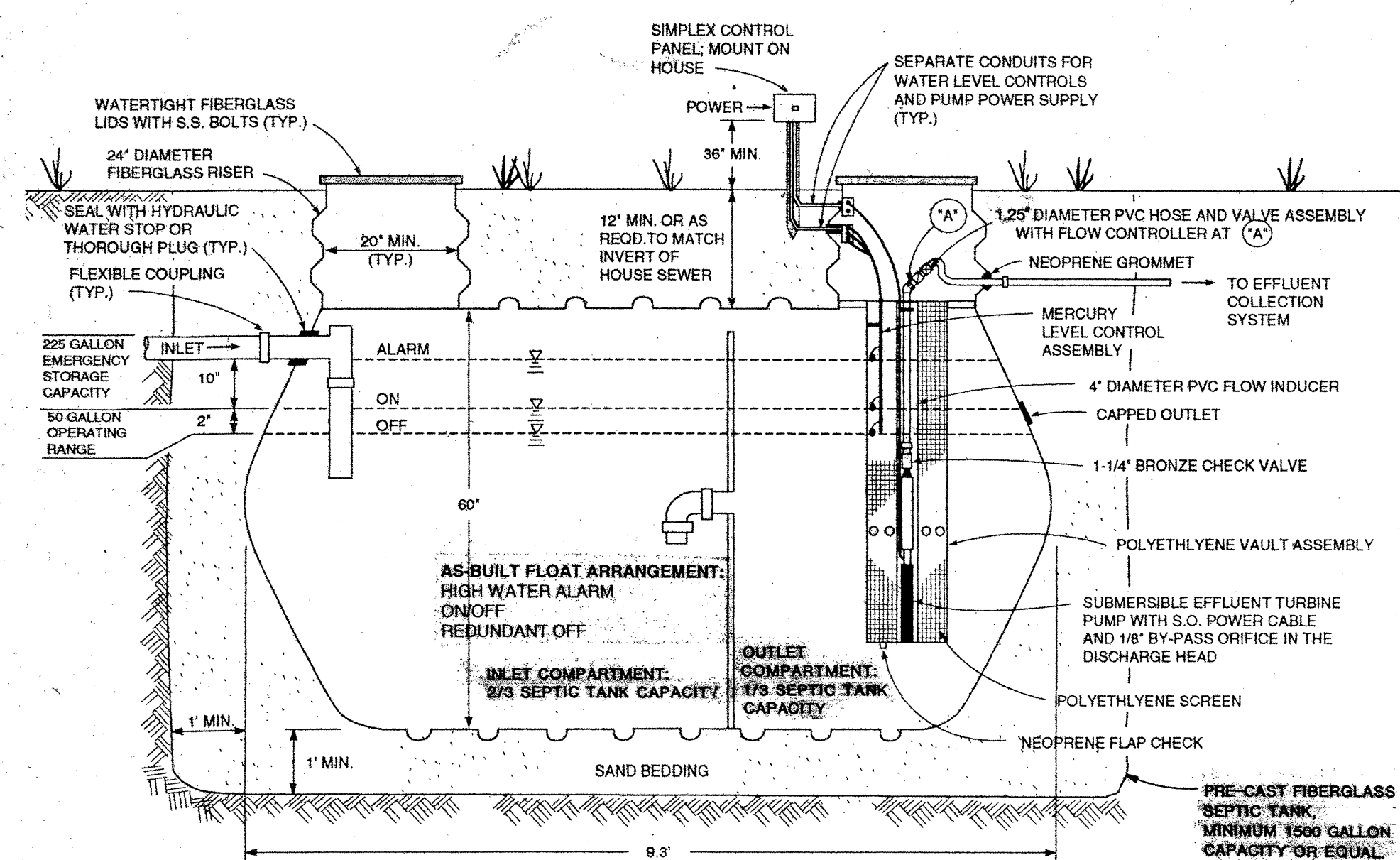


CROSS-SECTION
SEPTIC TANK WITH EFFLUENT FILTER

APPLIES TO THOSE PROPERTIES REQUIRING TRAFFIC RATED TANKS (SEE SCHEDULE ON SHEET A8)

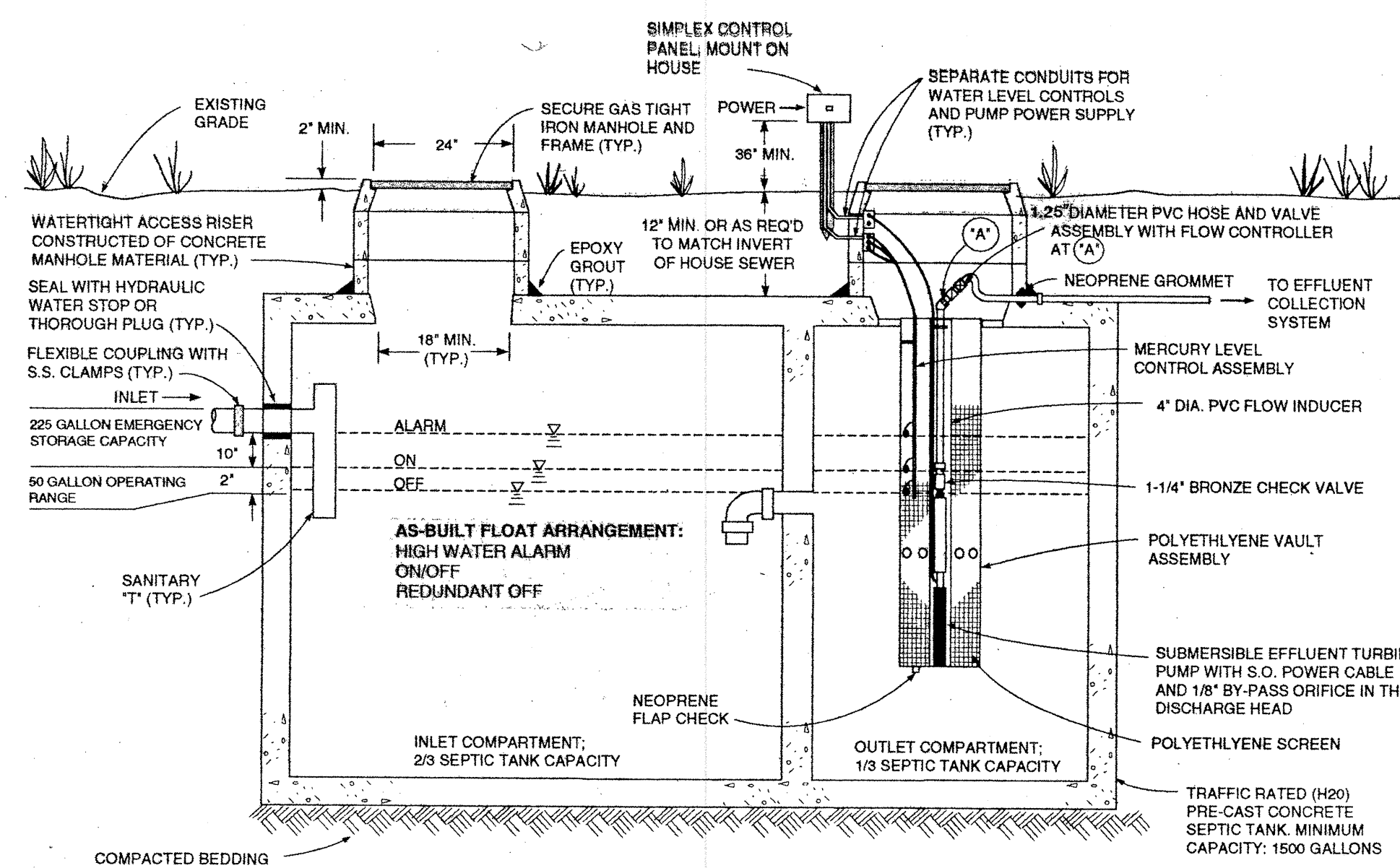


CROSS-SECTION
SEWAGE BACKFLOW VALVE



CROSS-SECTION
SEPTIC TANK EFFLUENT PUMP (STEP) DETAILS

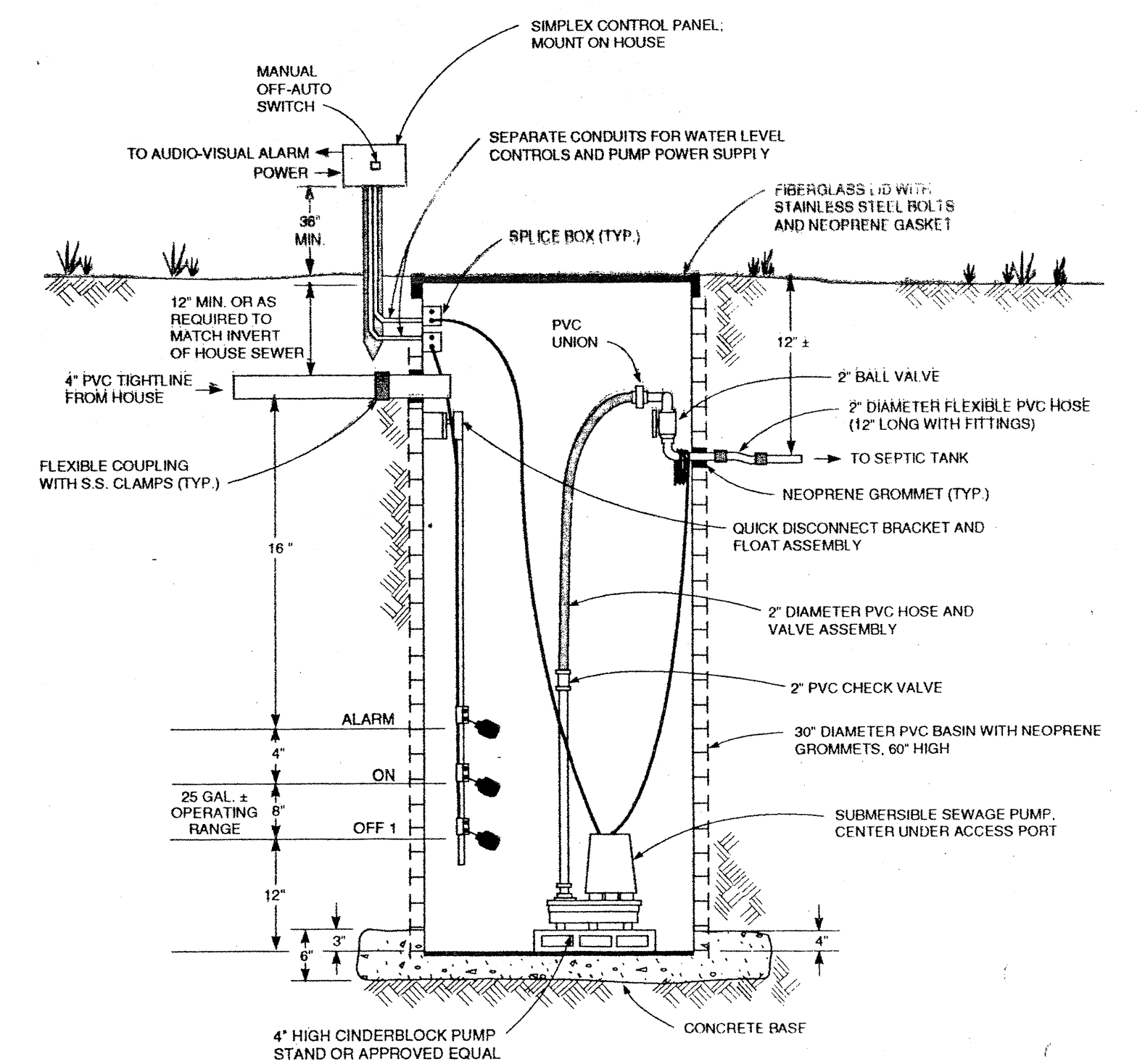
APPLICABLE FOR ALL CLUSTER SYSTEMS:
 DUPLEX PUMP AS-BUILT FLOAT ARRANGEMENT:
 HIGH WATER ALARM
 LAG ON
 LEAD ON
 LEAD OFF
 REDUNDANT OFF



CROSS-SECTION
SEPTIC TANK EFFLUENT PUMP (STEP) DETAILS

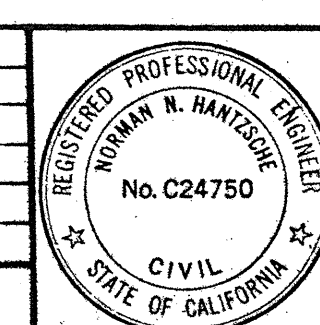
APPLIES TO THOSE PROPERTIES REQUIRING TRAFFIC RATED TANKS (SEE SCHEDULE ON SHEET A8)

APPLICABLE FOR ALL CLUSTER SYSTEMS:
 DUPLEX PUMP AS-BUILT FLOAT ARRANGEMENT:
 HIGH WATER ALARM
 LAG ON
 LEAD ON
 LEAD OFF
 REDUNDANT OFF



CROSS-SECTION
SEWAGE PUMP AND PUMP CHAMBER DETAILS

REV.	DATE	BY	DESCRIPTION



Questa Engineering Corporation
 CIVIL, ENVIRONMENTAL & AGRICULTURAL ENGINEERS
 1220 BRICKYARD COVE ROAD
 POINT RICHMOND, CALIFORNIA 94807

DESIGN: NH/RM	DATE
DRAWN: SD	10/94
CHK'D: NH	SCALE
APP'D:	NONE

LAKE CANYON COMMUNITY SERVICES DISTRICT
 COMMUNITY WASTEWATER PROJECT
 CONSTRUCTION DETAILS
 ON LOT FACILITIES

JOB NO. 92158
SHEET D1